

FLOOR SYSTEM

FLOOR WATERPROOFING TECHNOLOGY

SMART WATERPROOFING SYSTEM

CRYSTARM
SMART WATERPROOFING SYSTEM

www.crystarm.com

Drescherstraße 53, D-71277
Rutesheim, GERMANY
TEL : +49 (0) 7152 300 330
FAX : +49 (0) 7152 300 355
EMAIL : info@crystarm.com



TABLE OF CONTENTS

03

CRYSTARM SEALER®

05

CRYSTARM PROTECT®

CRYST SEALER®

PENETRATING CONCRETE SEALER.

>



CRYST SEALER® is a water-repellent sealer applied onto cured concrete that forms a sub-surface barrier inside the concrete, that protects concrete against water penetration for the long term. When sprayed CRYST SEALER® onto a concrete surface, it is penetrating deeply and reacts to form a non-soluble gel sealing pores, capillaries, and cracks.

FEATURE AND BENEFITS

- Heat resistant after setting.
- Can be used outdoors or indoors.
- Non-toxic - ideal for potable water.
- Rapid development of water repellency.
- Helps to prevent freeze or thaw damage.
- Highly durable and effective beading effect.
- Helps to protect reinforcing steel from corrosion.
- Not optically noticeable after the complete reaction.
- Increase resistance against water, chloride, sulfate ingress, carbonation, and other chemical attacks.

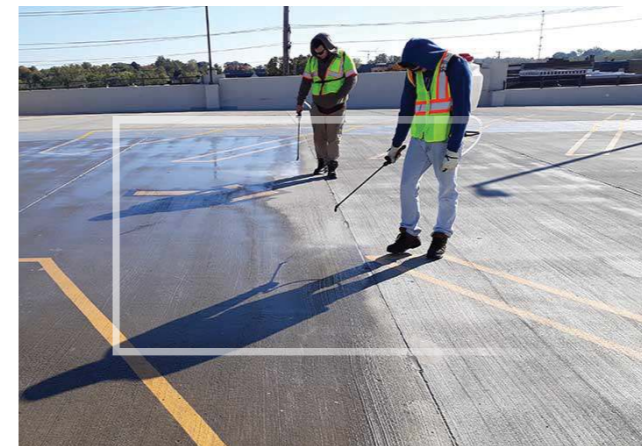


APPLICATION

CRYST SEALER® is ideal to apply on concrete, block or brick walls :

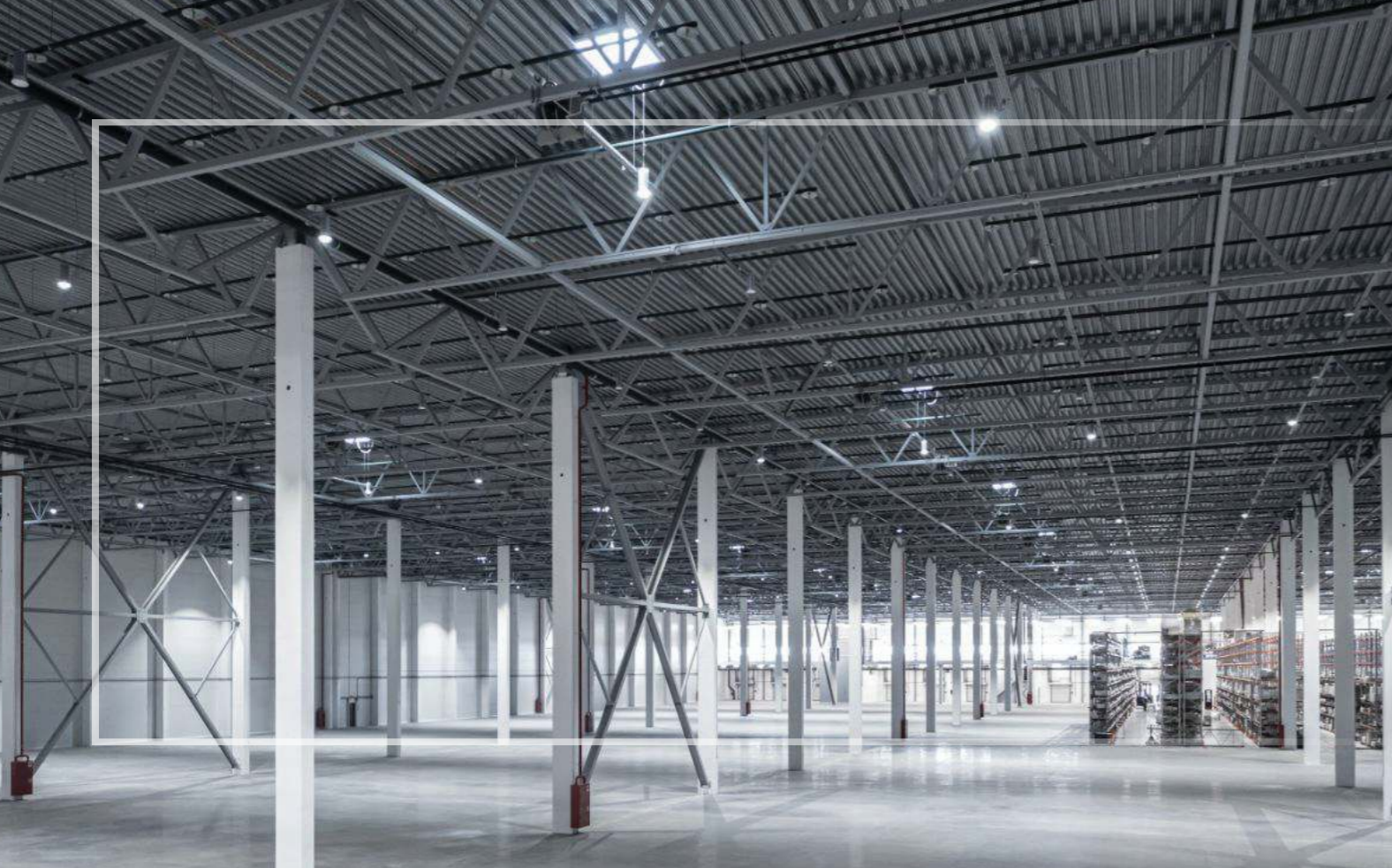
- Concrete roof.
- Airport runways.
- Parking structures.
- Marine floats and docks.
- Traffic-bearing structures.
- podium decks, Bridge decks.
- Roof tiles and unglazed floor tiles.
- Sidewalks, patios, balconies, steps.
- Concrete pavers and retaining walls.
- Driveways, including exposed aggregate.

In short, everywhere concrete is directly exposed to the elements and considerable thermal stress can be expected.



PACKAGING

CRYST SEALER® is available in 20 l gallon and 180 l drum.



PROTECTIVE AND SEALER FOR CONCRETE FLOORS.

CRYST PROTECT®

>



CRYST PROTECT® is a terminated binder based on α -silane technology specially formulated for the impregnation of mineral substrates or as a layer coating for enhancing the standard and hardened concrete surfaces and cementitious overlays by forming a sealed protective finish resistant to water and stains. CRYST PROTECT® provides a high gloss aesthetic finish, eliminating the need for floor waxing, polymer-based coatings, liquid polishes, and constant maintenance.

FEATURE AND BENEFITS

- Fast drying.
- low viscosity.
- Non-flammable.
- Easy application.
- Environmentally friendly.
- UV stable and breathable.
- Solvent and plasticizer-free.
- Eliminates constant floor waxing.
- Reduces floor maintenance costs.
- Can be used outdoors or indoors.
- Helps to prevent freeze or thaw damage.
- Excellent Stain-Protection / Easy to Clean.
- Provides high gloss and good light reflection.
- Nano molecules ensure deep penetration Nontoxic.
- Good scratch resistance, high hardness, and abrasion resistance.



APPLICATION

- CRYST PROTECT® is ideal to apply on concrete, block or brick walls :
- Terrazzo.
 - Aircraft hangars.
 - Warehouse floors.
 - Polished concrete.
 - Cementitious overlays.
 - Food-processing plants.
 - Showrooms and schools.
 - Distribution and storage facilities.
 - Standard and hardened concrete.
 - Manufacturing / pharmaceutical facilities.
 - Any type of facility with an exposed concrete surface.

PACKAGING

CRYST PROTECT® is available in 20 l gallon, 200 l drum.

