

INJECTION SYSTEM

INJECTION WATERPROOFING TECHNOLOGY

SMART WATERPROOFING SYSTEM

CRYSTARM
SMART WATERPROOFING SYSTEM

www.crystarm.com

Drescherstraße 53, D-71277

Rutesheim, GERMANY

TEL : +49 (0) 7152 300 330

FAX : +49 (0) 7152 300 355

EMAIL : info@crystarm.com



TABLE OF CONTENTS

03

CRYST INJECT FOAM®

05

CRYSTARM INJECT®

CRYST INJECT FOAM®

FLEXIBLE POLYURETHANE INJECTION FOAM FOR
FAST AND PERMANENT WATERTIGHT SOLUTION

>



CRYST INJECT FOAM® is a flexible, water-reactive polyurethane injection foam system designed to be fast foaming resin, which is used as a water stopper permanently against strong water flow. CRYST INJECT FOAM® is typically used to repair cracks or failed joints in concrete structures, and tunneling to seal fractures in rock formations. Component B serves as a catalyst and adjusts the reaction time. A lower dosage leads to a prolongation of the reaction time. In contact with minimal amounts of water, CRYST INJECT FOAM® reacts very fast to foam with closed cellular pores and shape-retaining hard flexible PU foam. After curing the material does not shrink due to wet/dry cycles. CRYST INJECT FOAM® has excellent penetrates deep in fine cracks to seal water and moist cracks permanently, making a watertight system.

FEATURE AND BENEFITS

- Ideal for potable water.
- Stops pressurized water.
- Reaction time adjustable.
- Phthalate plasticizer-free.
- Good chemical resistance.
- Permanent watertight solution.
- Used as a one-component system.
- Shape-retaining does not shrink after curing.
- Reacts only in contact with water and humidity.
- Low viscous that can penetrate deep in fine cracks.
- High volume expansion within a few seconds is more than 30.
- Long processing time when a mixed component is kept in closed condition.
- Excellent adhesion to wet surfaces on mineral building materials, rocks, metal, and certain plastics.



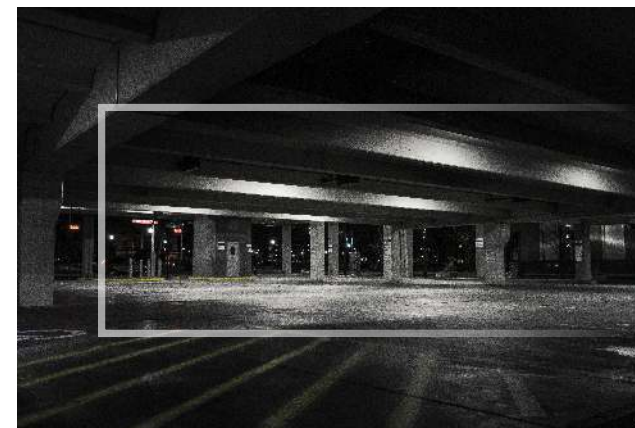
APPLICATION

CRYST INJECT FOAM® is recommended to stop flowing water flow in cracks, big gaps, voids, and joints for concrete structures, brickwork, and natural and artificial stonework. Typical areas of application are e.g., tunnels, basements, diaphragm walls, manholes, elevator pits, reservoirs, sewage tanks, water tanks, pools, soil stabilization, etc.

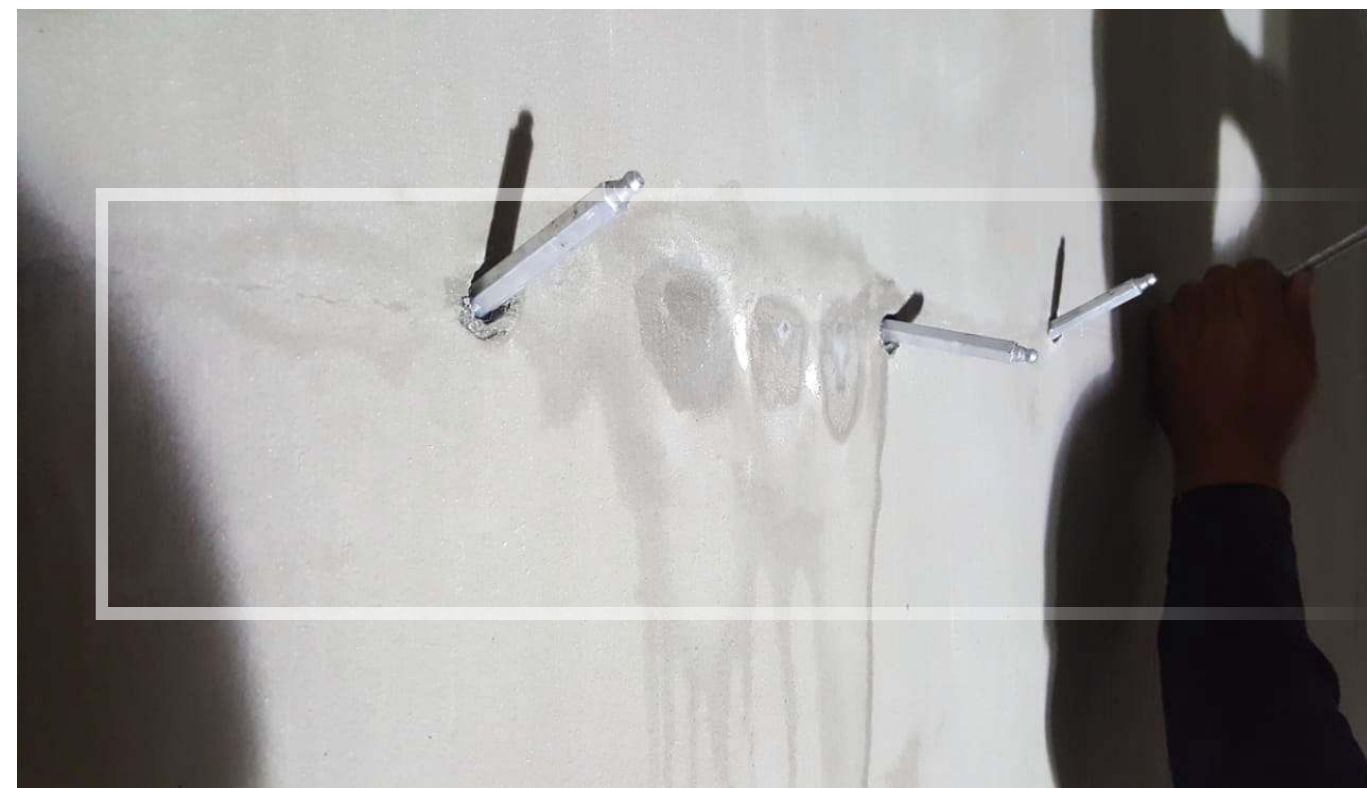


PACKAGING

CRYST INJECT FOAM® is available in :
Component A (Resin): 20 ltr metal canister
Component B (Catalyst): 2 ltr metal canister



2 in 1 MULTI POLYURETHANE INJECTION (SOLID ELASTIC RESIN , FOAM IN CONTACT WITH WATER) FOR PERMANENT WATERTIGHT SOLUTION



SEMI-RIGID POLYURETHANE INJECTION RESIN SYSTEM FOR PERMANENT WATERTIGHT SOLUTION

CRYST INJECT MULTI®



CRYST INJECT MULTI® is a two-component, water-reactive, phthalate-free, low viscous, and elastic polyurethane injection resin. CRYST INJECT MULTI® is designed to have two phases of reaction property. In contact with water, it reacts to a closed-cell elastic foam within seconds. In case there is no water CRYST INJECT MULTI® reacts as an elastic solid resin. This newly developed injection resin combines two injection resin systems in one product (foam and solid resin). Due to its very low viscosity, CRYST INJECT MULTI® has excellent penetrates deep in fine cracks to seal water, moist and dry cracks permanently, making a watertight system.

>



FEATURE AND BENEFITS

- Phthalate-free.
- Closed cell foam.
- Ideal for potable water.
- Environmentally friendly.
- Permanent watertight solution.
- Excellent adhesion to wet surfaces.
- Shape-retaining does not shrink after curing.
- High volume expansion within a few seconds.
- Good chemical resistance and alkaline stability.
- Can be injected through one component pump.
- Low viscous that have Excellent penetration properties.
- Long processing time when a mixed component is kept in closed condition.
- Multi-purpose in one product that can work as elastic solid resin or as foam in contact with water.

APPLICATION

CRYST INJECT MULTI® is used for elastic sealing injection of cracks, voids, and joints in concrete structures, brickwork, and natural and artificial stonework. Typical areas of application are e.g., tunnels, basements, diaphragm walls, manholes, elevator pits, reservoirs, sewage tanks, water tanks, pools, soil stabilization, etc.

CRYST INJECT MULTI® is available in :
Component A : 10 ltr metal canister.
Component B : 10 ltr metal canister.



CRYST INJECT RESIN®



CRYST INJECT RESIN® is a two-component (component A+B), phthalate-free, very low viscous, and elastic polyurethane injection resin. Due to the very low viscosity, it leads to very deep penetration into hairline cracks and fine structures. CRYST INJECT RESIN® is designed to seal moist and dry cracks permanently, making a watertight system that has a limited volume expansion in contact with water/humidity. CRYST INJECT RESIN® is not used against flowing water.

>



FEATURE AND BENEFITS

- Ideal for potable water.
- Environmentally friendly.
- Good chemical resistance.
- Phthalate and solvent-free.
- Used as a one-component system.
- Good bonding to moist and dry surfaces.
- Can be injected through a 1K or 2K component pump.
- Low viscosity helps ensure complete penetration inside cracks.
- Elastic and permanent seal helps to absorb limited movements.

APPLICATION

CRYST INJECT RESIN® can be directly used to permanently seal cracks, voids, and joints in concrete structures, brickwork, and natural and artificial stonework. If the structure has water leakage, it is recommended to inject with CRYST INJECT FOAM®. Applications include tunnels, basements, diaphragm walls, manholes, reservoirs, water tanks, pools, etc.

CRYST INJECT FOAM® is available in :
Component A : 10 ltr metal canister.
Component B : 10 ltr metal canister.